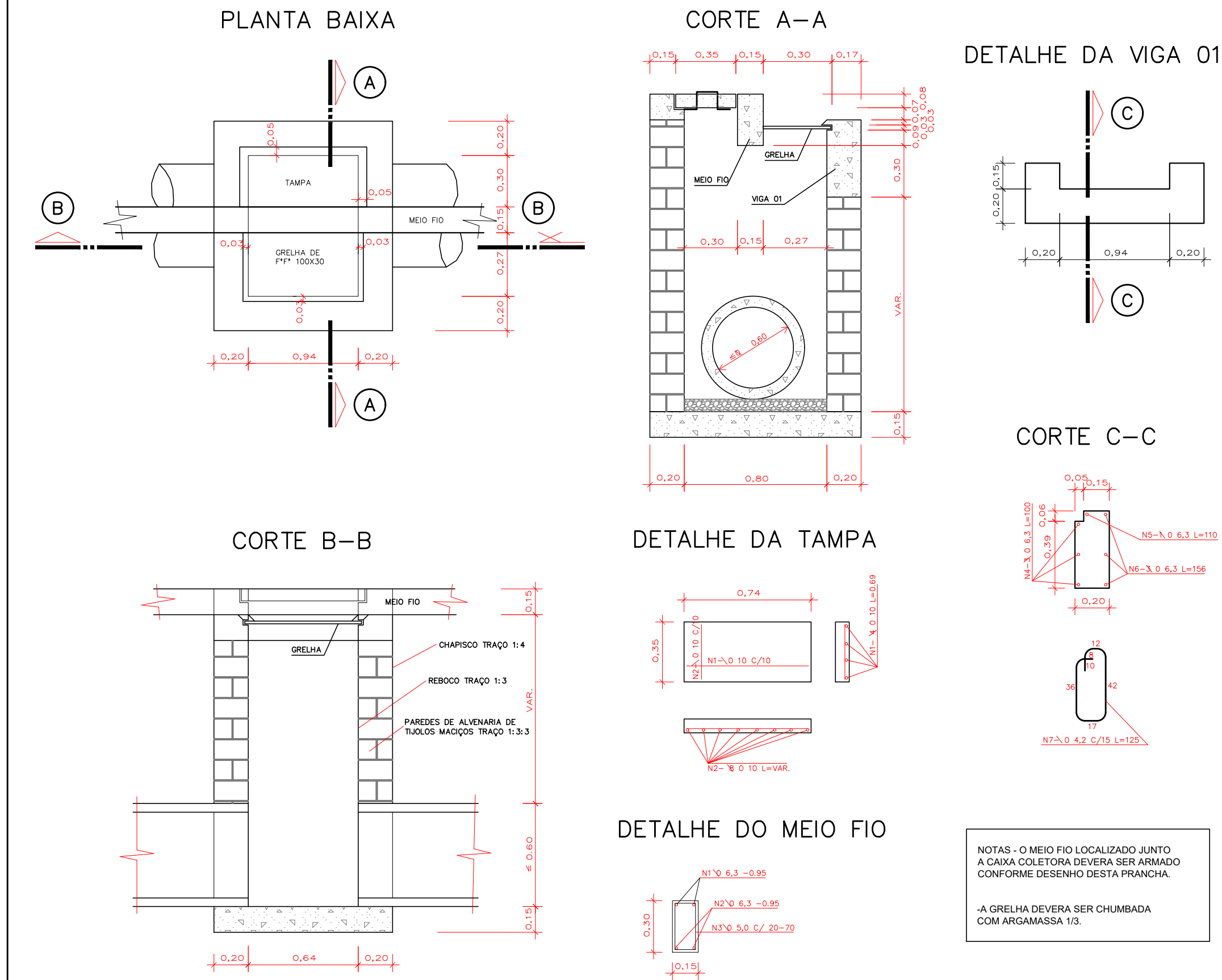
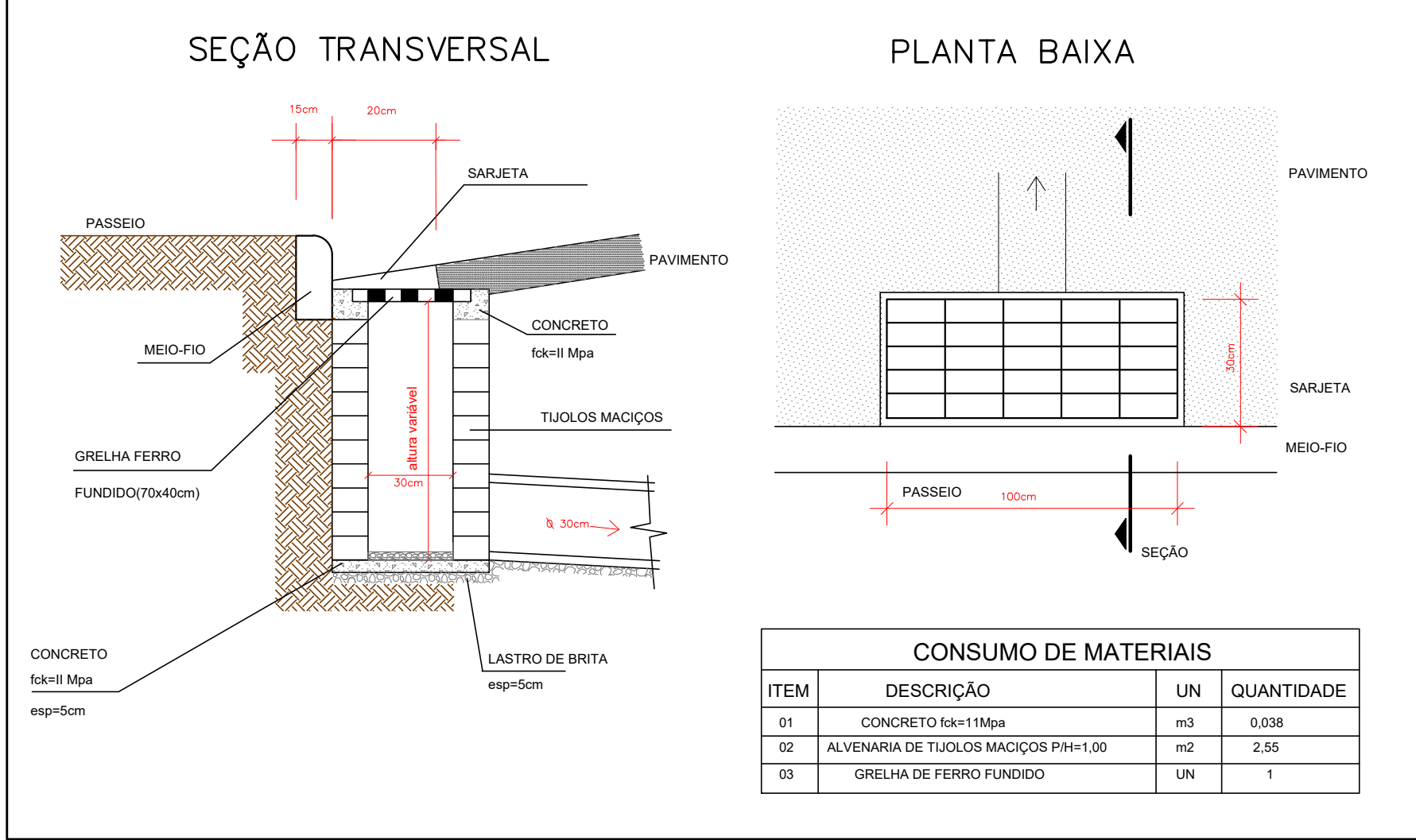


CAIXA COLETORA – TIPO 1



CAIXA COLETORA – TIPO 2



CAIXA DE LIGAÇÃO

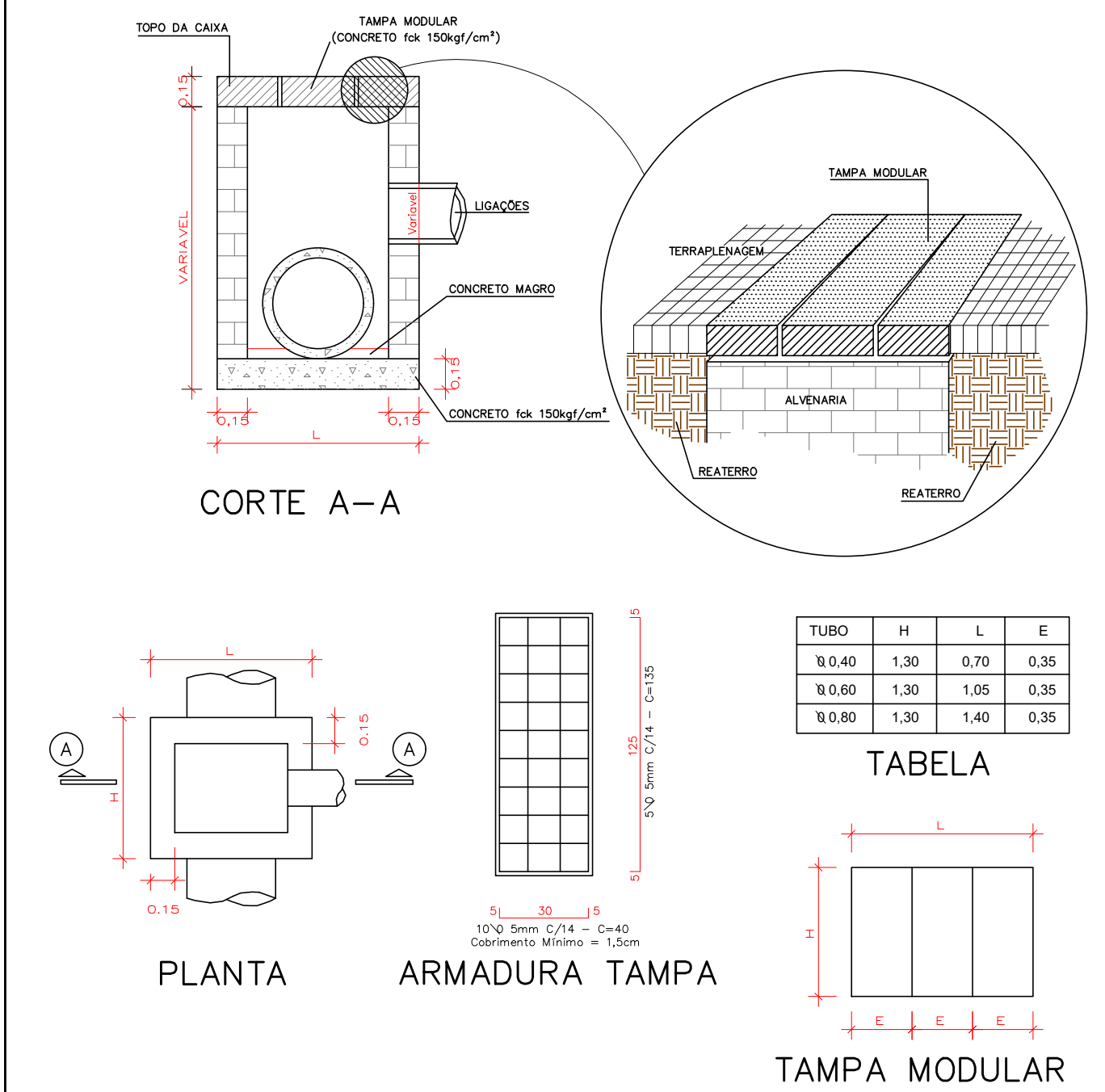


TABELA DE ESTRUTURAS REDE DE DRENAGEM

NOME	COTAS	PROFUNDIDADE (m)
CC - II - EST. 100.75	CT= 12.77 CF= 11.65	1.11
CC-I - EST. 99.66	CT= 12.75 CF= 11.55	1.20
CC - II - EST. 147.26	CT= 12.58 CF= 11.47	1.10
CC-I - EST. 148.75	CT= 12.57 CF= 11.39	1.18
CC - II - EST. 72.22	CT= 12.50 CF= 11.36	1.13
CC-I - EST. 69.93	CT= 12.46 CF= 11.20	1.26
CC - II - EST. 178.48	CT= 12.44 CF= 11.33	1.11
CC-I - EST. 179.38	CT= 12.43 CF= 11.16	1.27
CC - II - EST. 600.96	CT= 12.39 CF= 11.26	1.12
CC-I - EST. 599.86	CT= 12.36 CF= 11.09	1.26
CC - II - EST. 208.23	CT= 12.31 CF= 11.17	1.14
CC-I - EST. 209.78	CT= 12.29 CF= 11.01	1.28
CC - II - EST. 560.50	CT= 12.11 CF= 11.01	1.10
CC-I - EST. 559.88	CT= 12.10 CF= 10.66	1.44
CC - II - EST. 239.01	CT= 11.99 CF= 10.87	1.12
CC-I - EST. 44.91	CT= 11.97 CF= 10.38	1.59
CC-I - EST. 240.15	CT= 11.95 CF= 10.70	1.26
CC - II - EST. 521.12	CT= 11.93 CF= 10.83	1.11
CC-I - EST. 520.04	CT= 11.92 CF= 10.69	1.23
CC - II - EST. 45.50	CT= 11.89 CF= 10.42	1.47

TABELA DE ESTRUTURAS DA REDE REDE DE DRENAGEM

NOME	COTAS	PROFUNDIDADE (m)
CC - II - EST. 482.13	CT= 11.74 CF= 10.64	1.11
CC-I - EST. 480.82	CT= 11.74 CF= 10.50	1.24
CC - II - EST. 442.17	CT= 11.56 CF= 10.47	1.09
CC-I - EST. 439.96	CT= 11.54 CF= 10.21	1.33
CC - II - EST. 277.98	CT= 11.41 CF= 10.28	1.13
CC-I - EST. 279.67	CT= 11.38 CF= 10.13	1.25
CC - II - EST. 402.21	CT= 11.35 CF= 10.23	1.12
CC-I - EST. 399.98	CT= 11.35 CF= 9.85	1.49
CC-I - EST. 359.60	CT= 11.14 CF= 9.89	1.25
CC - II - EST. 318.07	CT= 11.02 CF= 9.90	1.12
CC-I - EST. 319.63	CT= 11.00 CF= 9.57	1.43
CC - II - EST. 9.66	CT= 10.99 CF= 9.85	1.14
CL - EST. ???	CT= 9.80 CF= 9.30	0.50

TABELA DE TUBOS DA REDE REDE DE DRENAGEM

TUBO	DN (m)	COMPRIMENTO (m)	DECLIVIDADE (%)
BSTC DN 0.60M CONCRETO - EST. 44.91	0.60	36	2.43%
BSTC DN 0.30M CONCRETO - EST. 45.50	0.30	6	0.71%
BSTC DN 0.60M CONCRETO - EST. 9.10	0.60	11	2.49%
BSTC DN 0.30M CONCRETO - EST. 9.66	0.30	6	17.07%
BSTC DN 0.40M CONCRETO - EST. 599.86	0.40	40	0.50%
BSTC DN 0.60M CONCRETO - EST. 559.88	0.60	40	0.50%
BSTC DN 0.60M CONCRETO - EST. 520.04	0.60	39	0.50%
BSTC DN 0.60M CONCRETO - EST. 480.82	0.60	41	0.50%
BSTC DN 0.60M CONCRETO - EST. 439.96	0.60	40	0.50%
BSTC DN 0.60M CONCRETO - EST. 399.98	0.60	40	0.50%
BSTC DN 0.60M CONCRETO - EST. 240.15	0.60	40	1.43%
BSTC DN 0.60M CONCRETO - EST. 279.67	0.60	40	1.43%
BSTC DN 0.80M CONCRETO - EST. 319.63	0.80	22	3.66%
BSTC DN 0.40M CONCRETO - EST. 148.75	0.40	31	0.65%
BSTC DN 0.60M CONCRETO - EST. 179.38	0.60	30	0.49%
BSTC DN 0.60M CONCRETO - EST. 209.78	0.60	30	1.13%
BSTC DN 0.40M CONCRETO - EST. 99.66	0.40	30	1.12%
BSTC DN 0.40M CONCRETO - EST. 69.93	0.40	19	3.80%
BSTC DN 0.30M CONCRETO - EST. 600.96	0.30	6	0.49%
BSTC DN 0.30M CONCRETO - EST. 560.50	0.30	6	6.20%

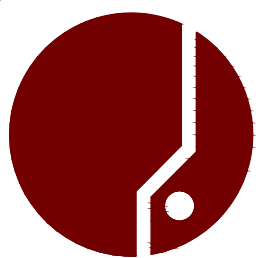
TABELA DE TUBOS DA REDE REDE DE DRENAGEM

TUBO	DN (m)	COMPRIMENTO (m)	DECLIVIDADE (%)
BSTC DN 0.30M CONCRETO - EST. 521.12	0.30	6	0.47%
BSTC DN 0.30M CONCRETO - EST. 482.13	0.30	6	0.47%
BSTC DN 0.30M CONCRETO - EST. 442.17	0.30	6	4.34%
BSTC DN 0.30M CONCRETO - EST. 402.21	0.30	6	6.44%
BSTC DN 0.30M CONCRETO - EST. 147.26	0.30	6	0.51%
BSTC DN 0.30M CONCRETO - EST. 178.48	0.30	6	0.48%
BSTC DN 0.30M CONCRETO - EST. 208.23	0.30	6	0.48%
BSTC DN 0.30M CONCRETO - EST. 239.01	0.30	5	0.50%
BSTC DN 0.30M CONCRETO - EST. 277.98	0.30	6	0.48%
BSTC DN 0.30M CONCRETO - EST. 318.07	0.30	6	0.47%
BSTC DN 0.30M CONCRETO - EST. 100.75	0.30	6	0.48%
BSTC DN 0.30M CONCRETO - EST. 72.22	0.30	6	0.83%
BSTC DN 0.60M CONCRETO - EST. 359.60	0.60	40	0.76%

DRENAGEM PLUVIAL

MUNICÍPIO
SANTO AMARO DA IMPERATRIZ – SC

OBRA	CONTEÚDO
RUA ISIDORA SILVA MACIEL	PROJETO DE DRENAGEM PLUVIAL DETALHAMENTOS E TABELAS
PROJETO	APROVAÇÃO DA PREFEITURA
	<input checked="" type="checkbox"/> Aprovado
REVISÃO	DATA
VERSÃO INICIAL	AGO/2023
	PRANCHA
	2/2



ASSOCIAÇÃO DOS MUNICÍPIOS
DA REGIÃO DA GRANDE FLORIANÓPOLIS
"GRANFPOLIS"
ASSESSORIA DE ENGENHARIA E ARQUITETURA