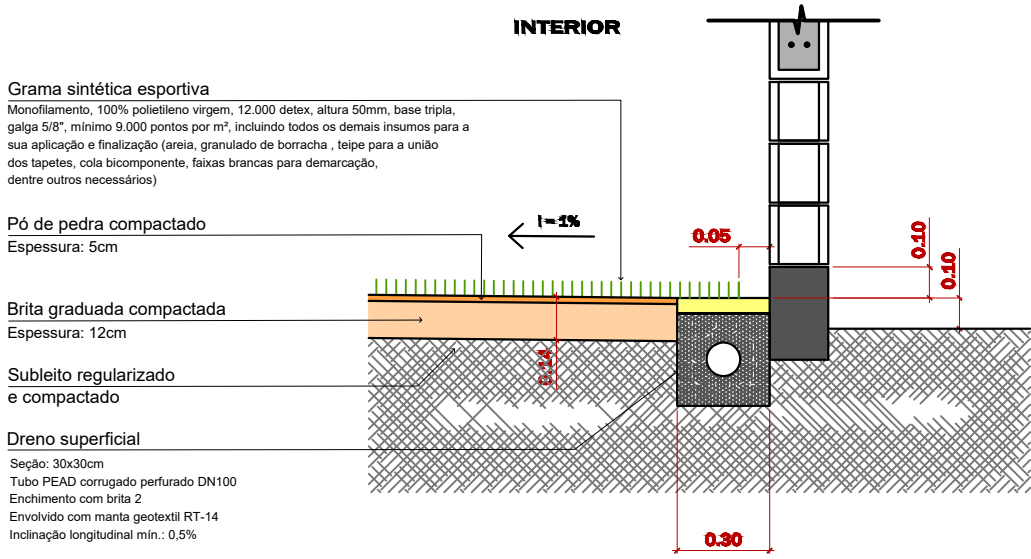


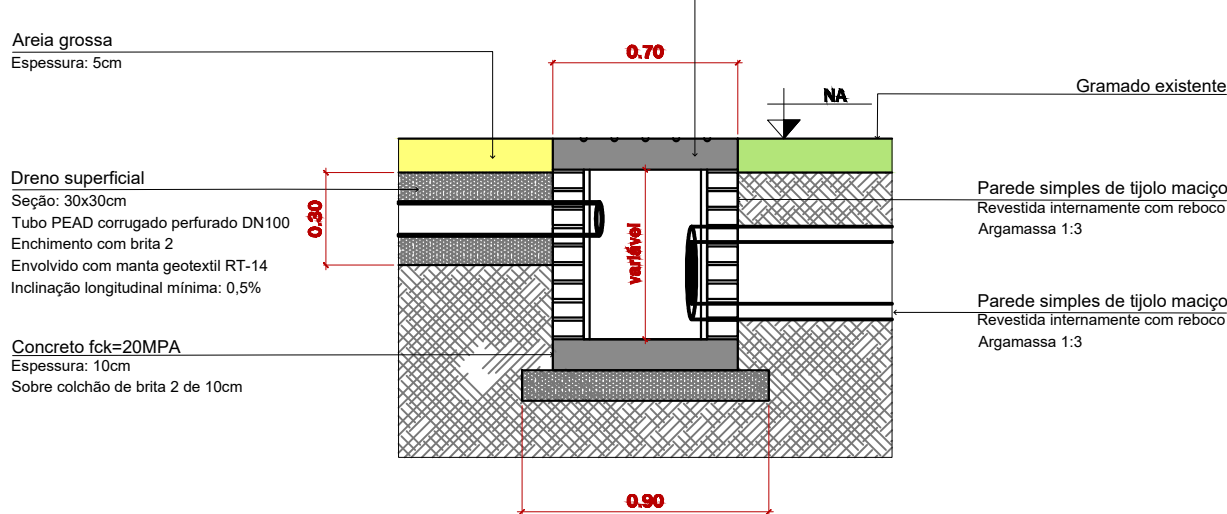
PLANTA DE DETALHAMENTO

OBS: Logo após fechamento da massa gesso, espalhar uma camada de areia grossa sobre os drenos e laterais evitando contaminação por barro, material orgânico ou outros resíduos



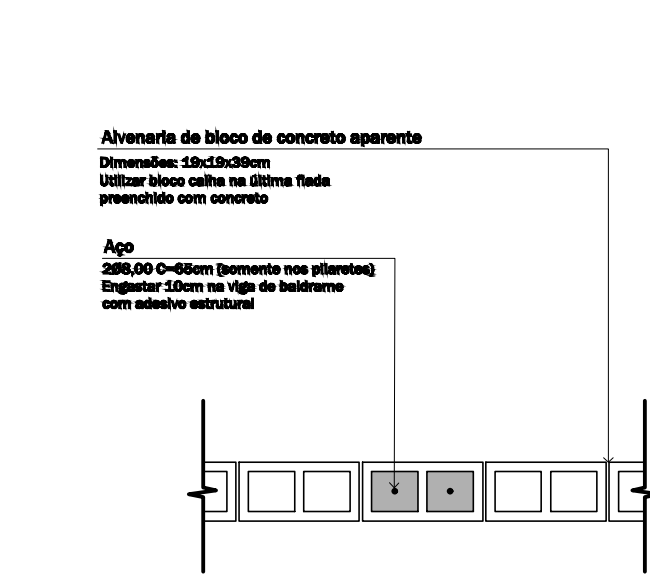
1 DETALHE - SEÇÃO DRENO

ESCALA 1:25



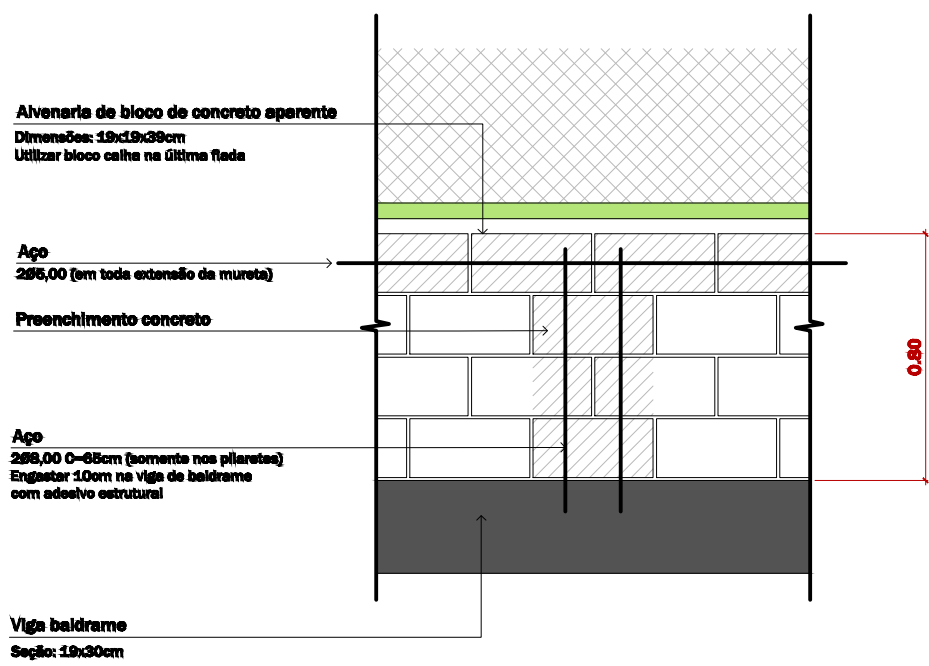
2 DETALHE - CAIXA DRENAGEM

ESCALA 1:25



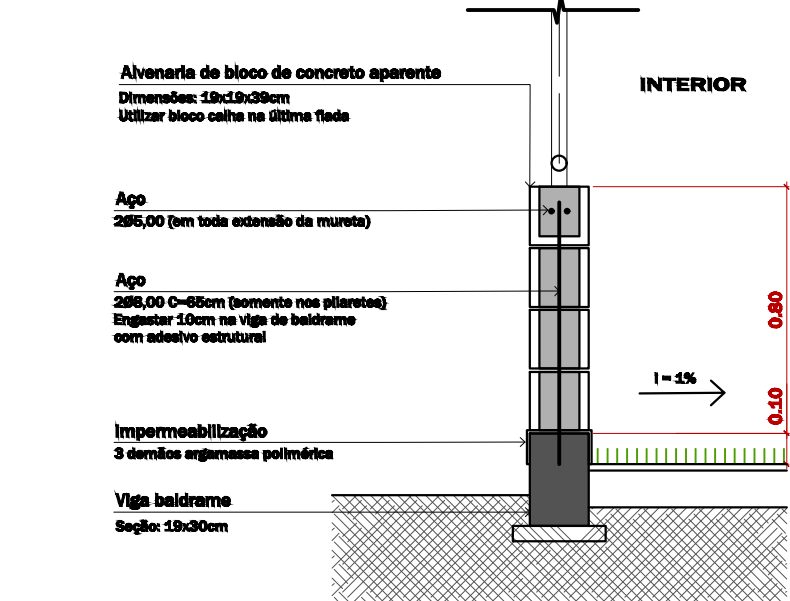
4 PLANTA - PILARETE S/ TUBO

ESCALA 1:25



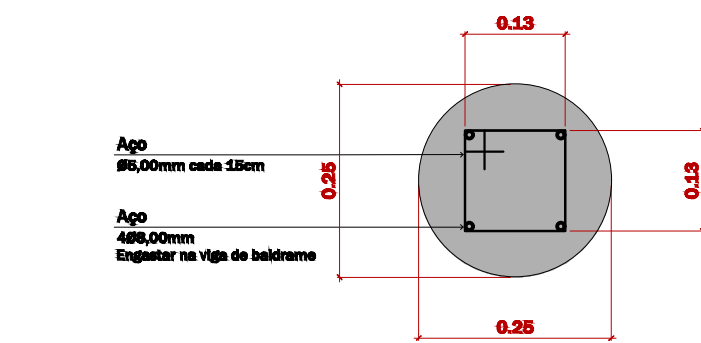
5 ELEVÇÃO - PILARETE S/ TUBO

ESCALA 1:25



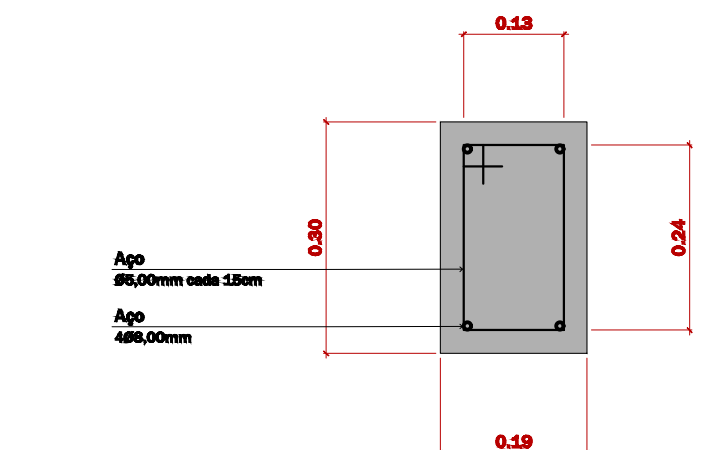
6 CORTE - PILARETE S/ TUBO

ESCALA 1:25



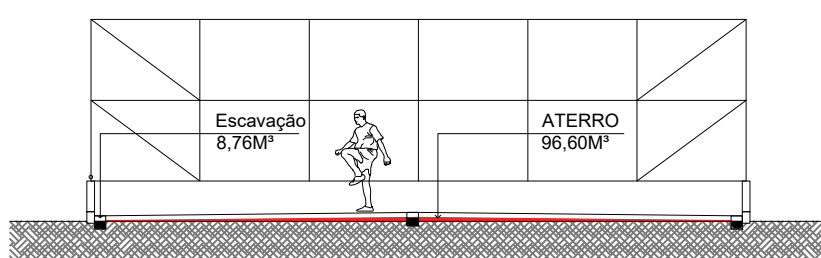
7 DETALHE - SEÇÃO BROCA

ESCALA 1:10



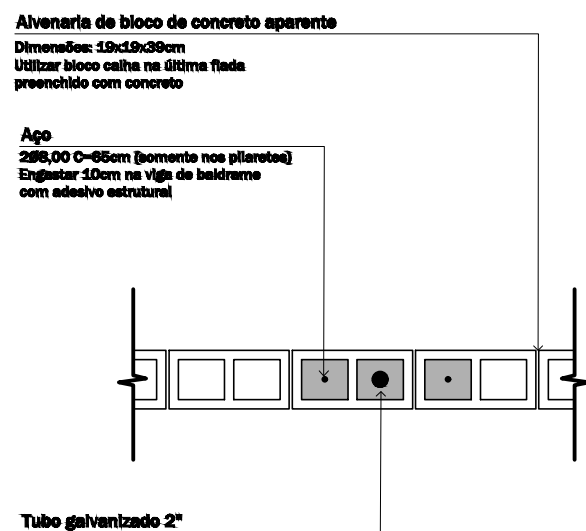
8 DETALHE - SEÇÃO BALDRAME

ESCALA 1:10



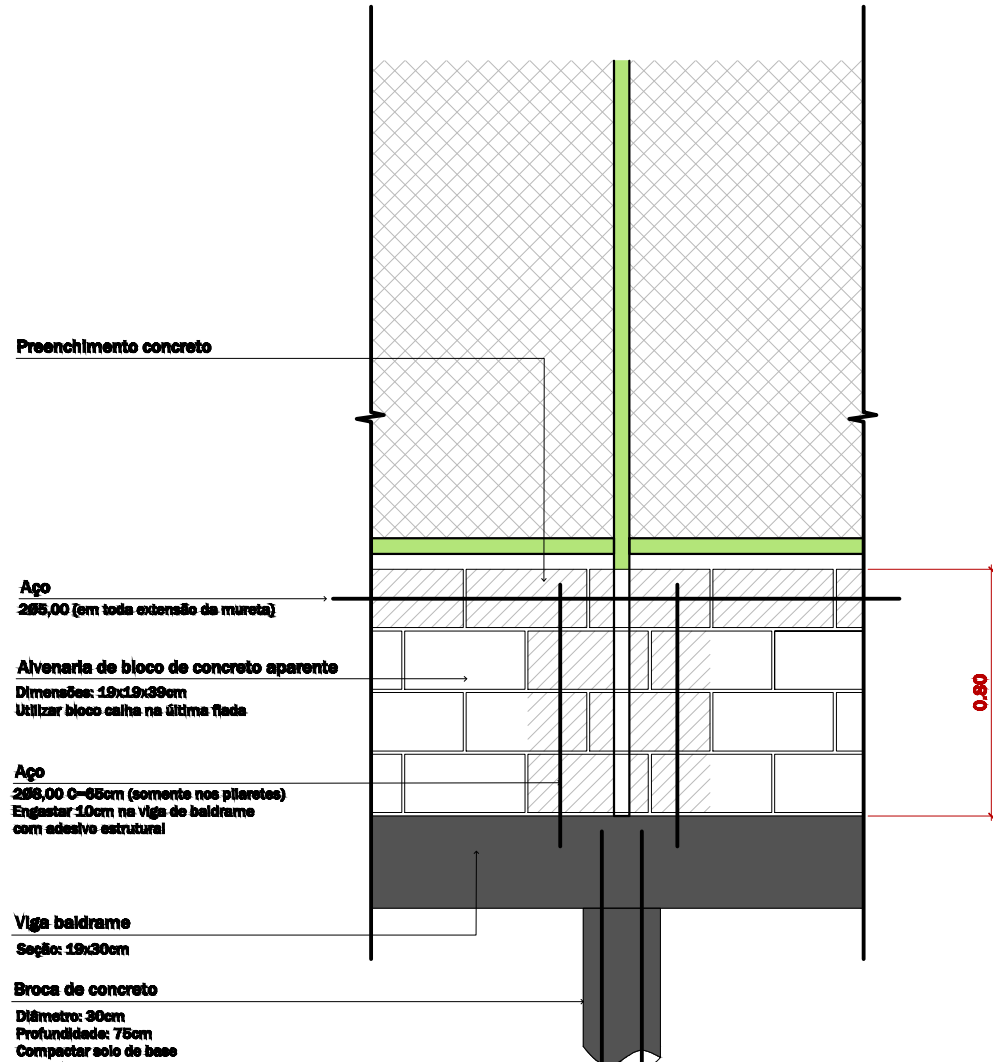
12 SEÇÃO - ATERRO

ESCALA 1:200



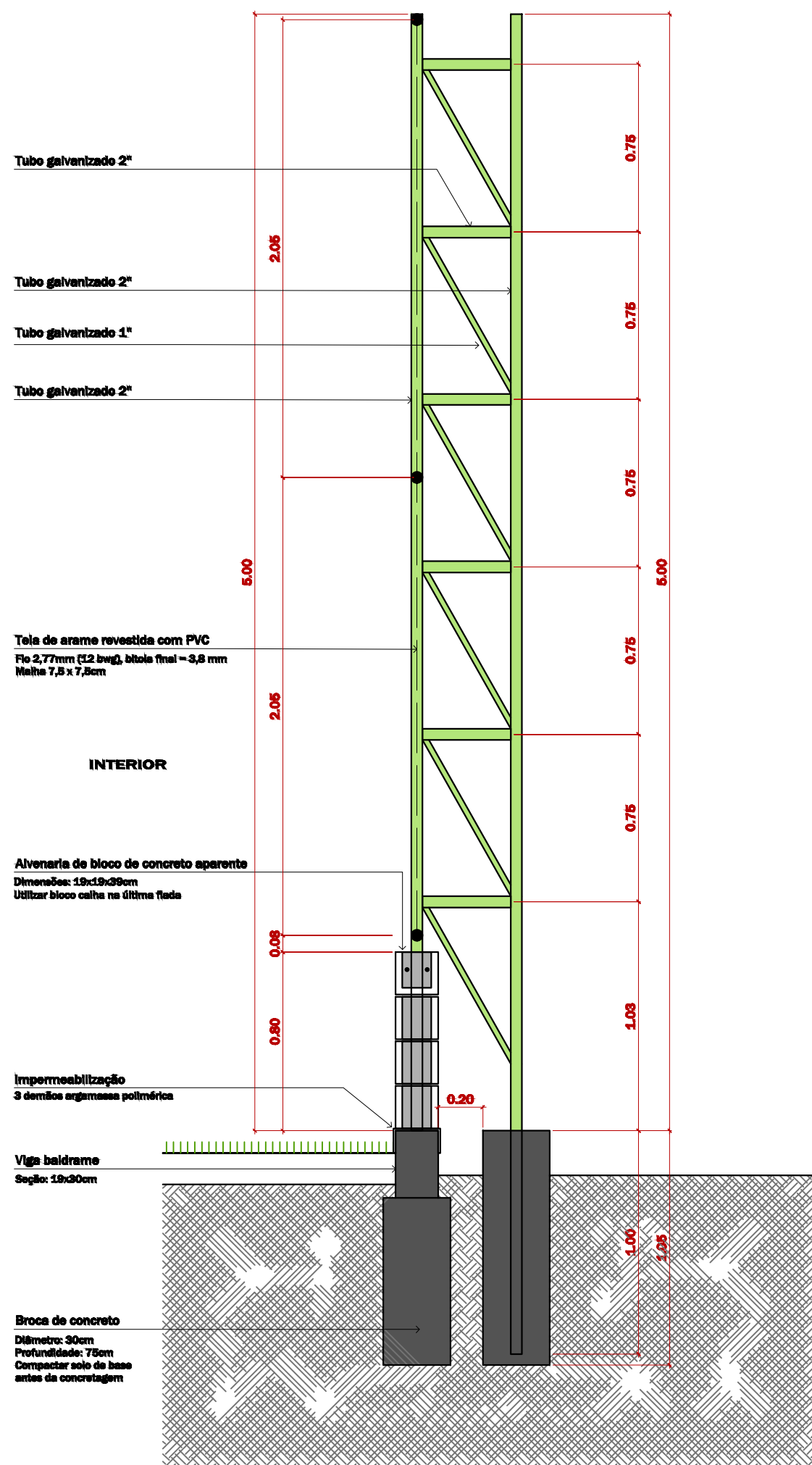
9 PLANTA - PILARETE C/ TUBO

ESCALA 1:25



10 ELEVÇÃO - PILARETE C/ TUBO

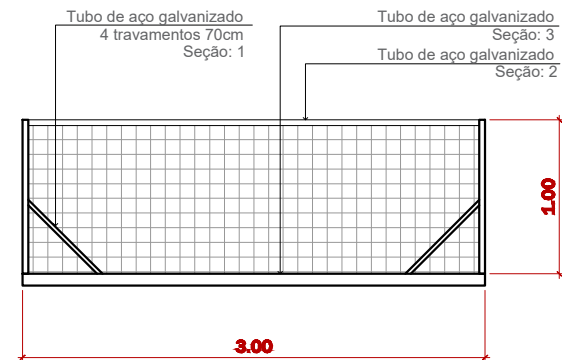
ESCALA 1:25



11 CORTE - PILARETE C/ TUBO

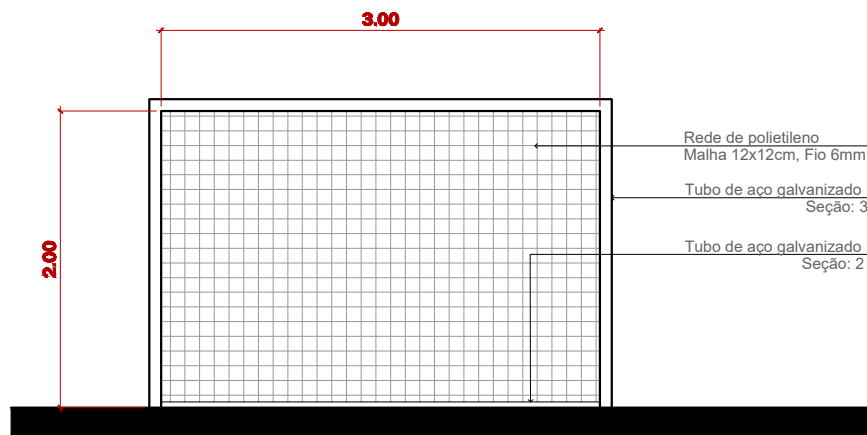
ALAMBRADO FUNDOS

ESCALA 1:25



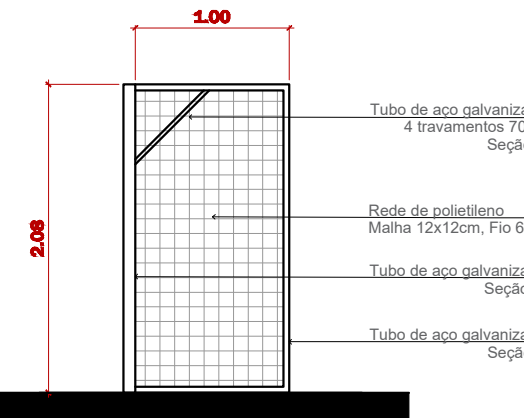
13 VISTA SUPERIOR - TRAVE

ESCALA 1:50



14 VISTA FRONTAL - TRAVE

ESCALA 1:50



15 VISTA LATERAL - TRAVE

ESCALA 1:50

00	PROJETO BÁSICO	16/04/2026
Nº	DESCRIÇÃO	DATA
 PREFEITURA MUNICIPAL SANTO AMARO DA IMPERATRIZ S/C PRAÇA GOVERNADOR IVO SILVEIRA, 306 - FONE 3245 4322		
PROJETO		
PLANTA DE LOCAÇÃO		
OBRA	PROPRIETÁRIO	
Campo de Futebol Society	Prefeitura Municipal Santo Amaro da Imperatriz/SC CNPJ: 82.892.324/0001-46	
	RESPONSÁVEL TÉCNICO	
CONTEÚDO	WILLIAM ABRANCHES BERNARDINO Eng. Civil - CREA-SC 189108-6	
PLANTA_DE_DETALHAMENTOS	PRANCHA:	
LOCAL	AV. SERRA DO TABULEIRO - T1, 550, SUL DO RIO, LOTEAMENTO CHÁCARA DONA EMÍLIA	
ÁREA TOTAL DO LOTE	DATA	ESCALA
5.256,17m²	16/04/2026	1:2

PRANCHA:

04/04